



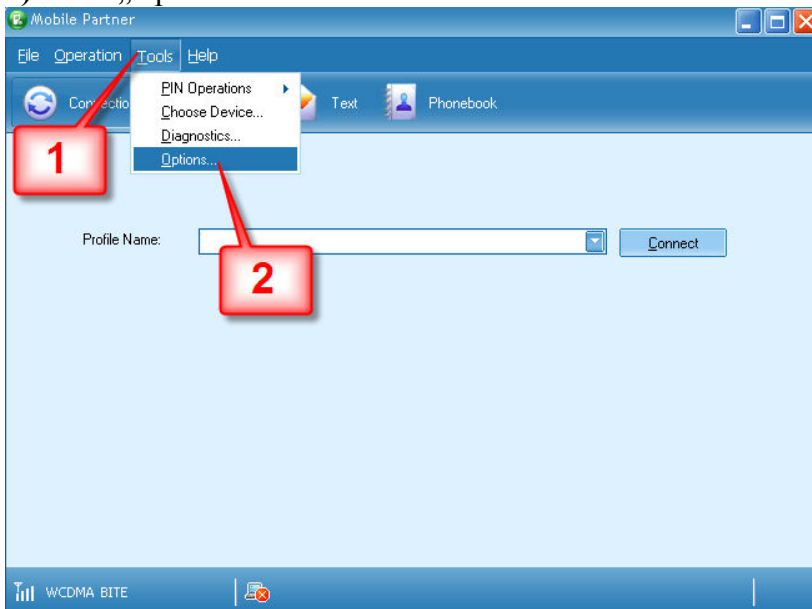
## Using B970 gateway in USB modem mode

In order to use B970 gateway as USB modem, the following steps should be done:

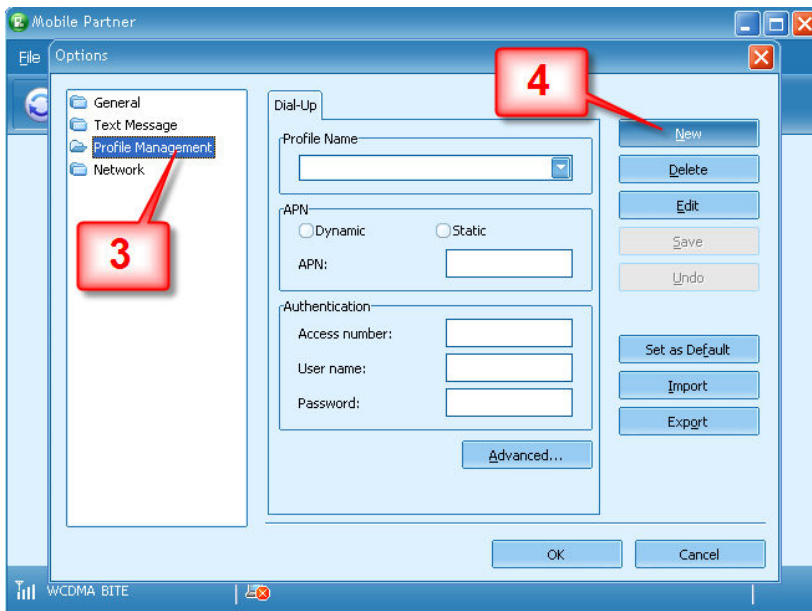
- a) Connect B970 gateway with your computer via USB cable (USB cable is provided in the package). Please note that B970 as USB modem works on Windows OS (2000, XP, Vista). Do not forget to insert SIM card into the B970 gateway.
- b) Setup wizard of „Mobile Partner“ software should start automatically. If software setup wizard does not start automatically go to „My Computer“ and double-click on „Mobile Partner“ disk. Install „Mobile Partner“ software.

When main window of „Mobile Partner“ appear on your screen you should create new profile according to your data rate plan. To create new profile do the following steps:

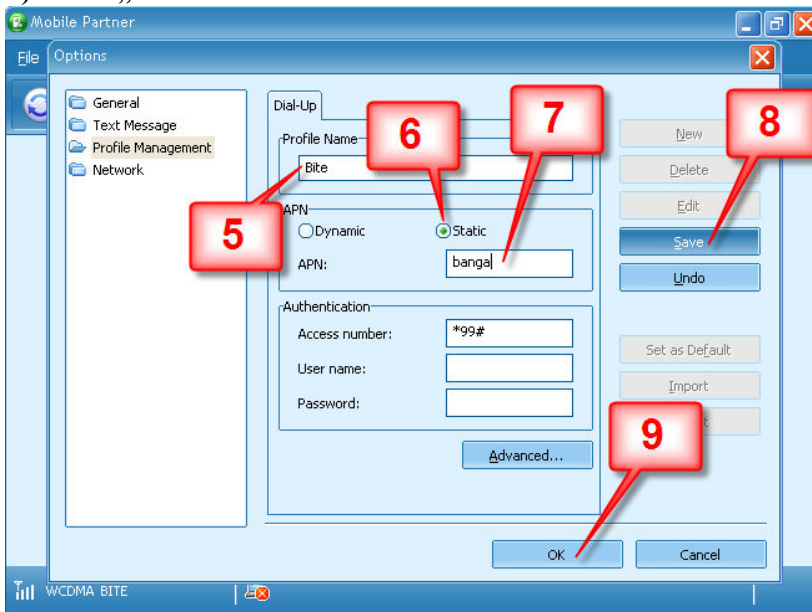
- 1) Click „Tools“
- 2) Click „Options...“



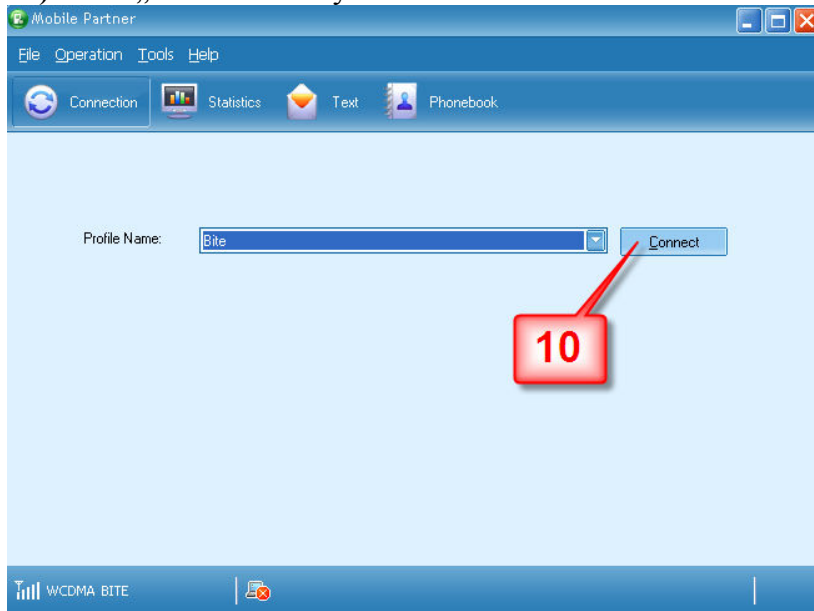
- 3) Click „Profile Management“
- 4) Click „New“



- 5) In text field „Profile Name“ input the title for your new profile, in example **Bite**
- 6) Choose **Static** APN
- 7) In text field „APN“ input the APN name **bangal** (if your rate plan is VMC Mini or VMC Standard) or **bangapro** (if your rate plan is VMC Pro)
- 8) Click „Save“
- 9) Click „OK“



**10) Click „Connect“ and you will be connected to the internet**



**11) Once you are done, press „Disconnect“ and you will be disconnected from the internet**

